



مؤتمر عجمان  
الدولي السادس للبيئة  
Ajman 6<sup>th</sup> International  
Environment Conference



## CAN WE SUSTAIN THE ATMOSPHERE

Dr. Suhail Al Ghfeli  
CNHS – Zayed University

TOWARDS >>>>

**2071**

SHAPING THE

**FUTURE**

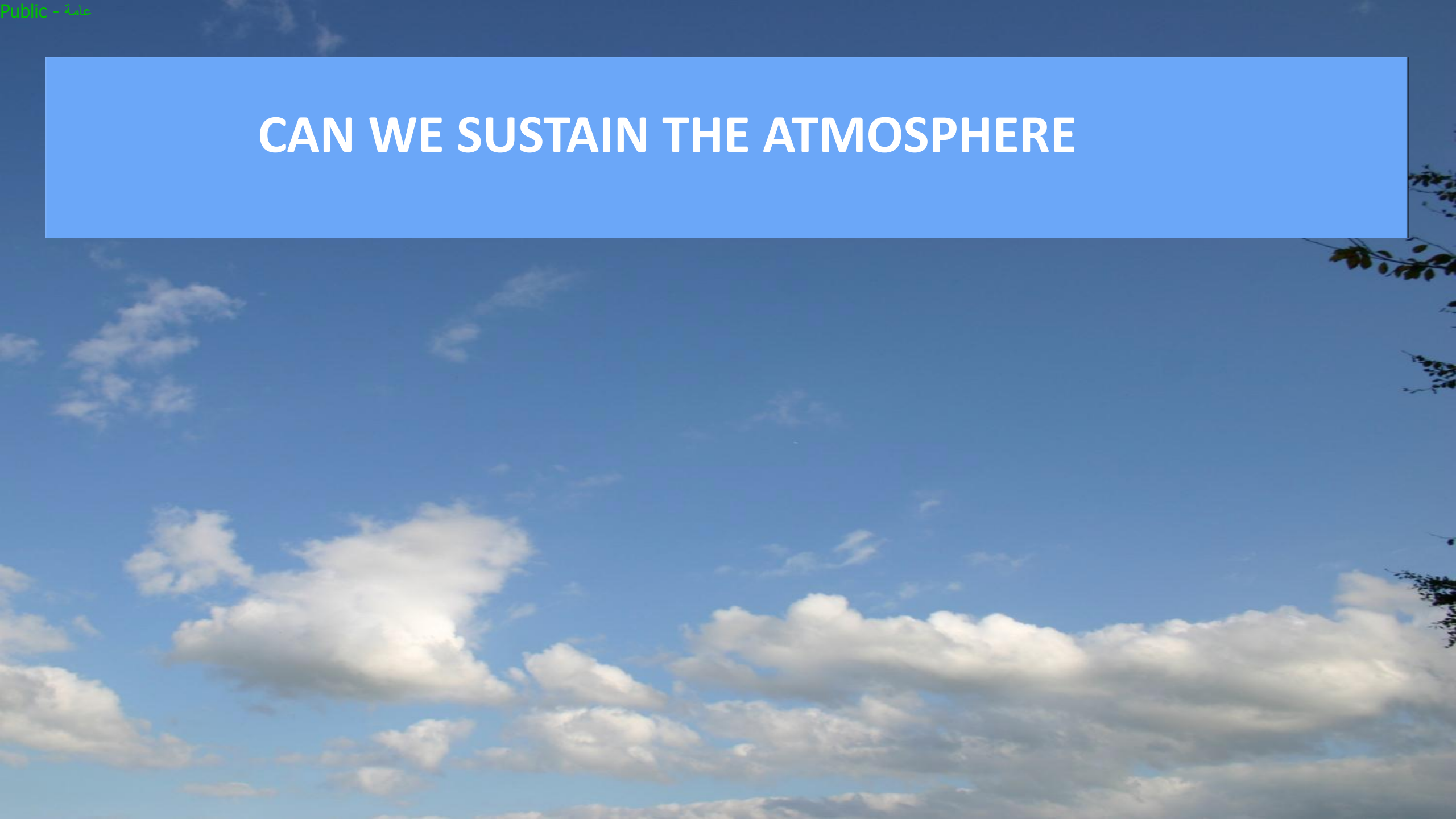
FOR ENVIRONMENTAL

**SUSTAINABILITY**

Public - عامة

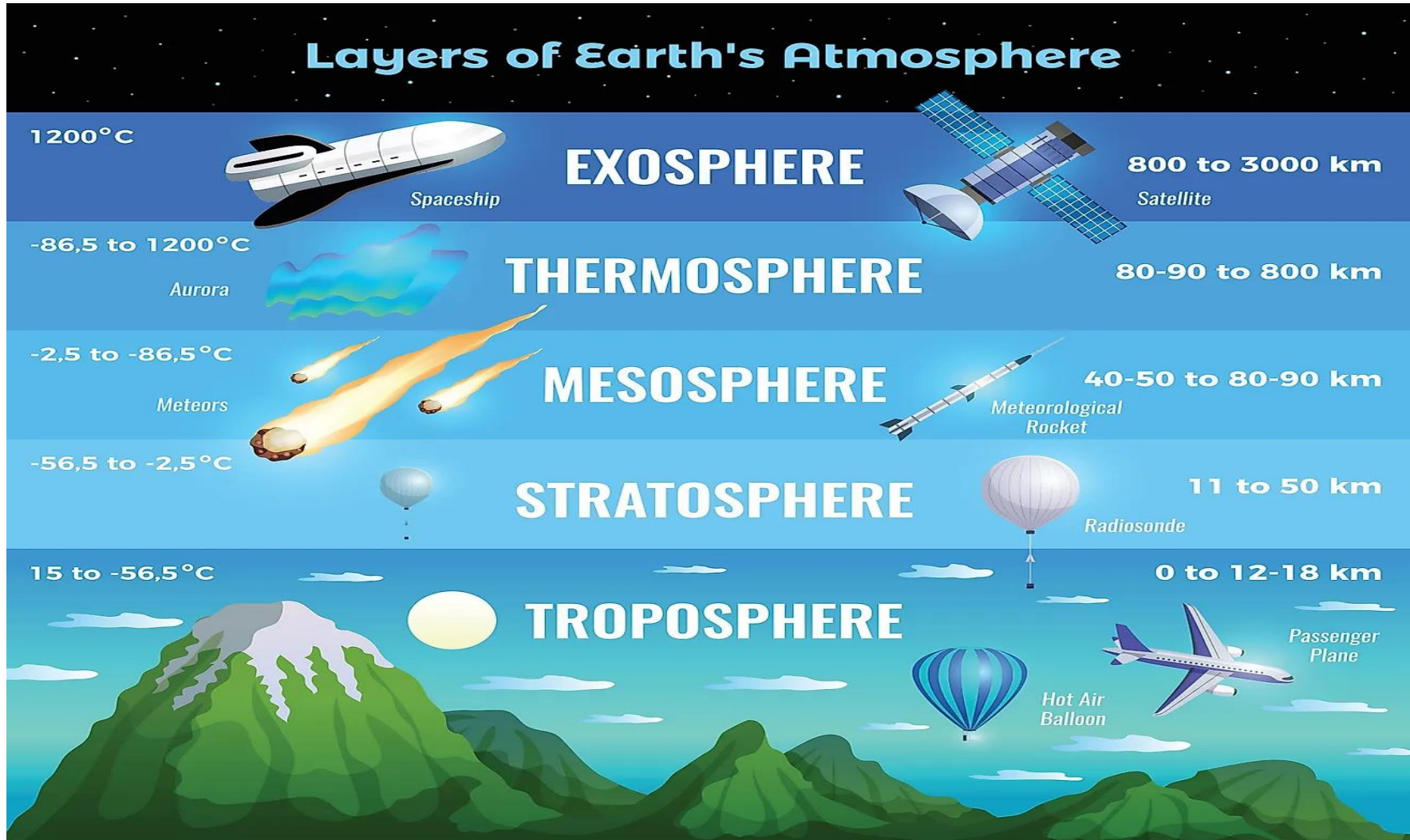


# CAN WE SUSTAIN THE ATMOSPHERE



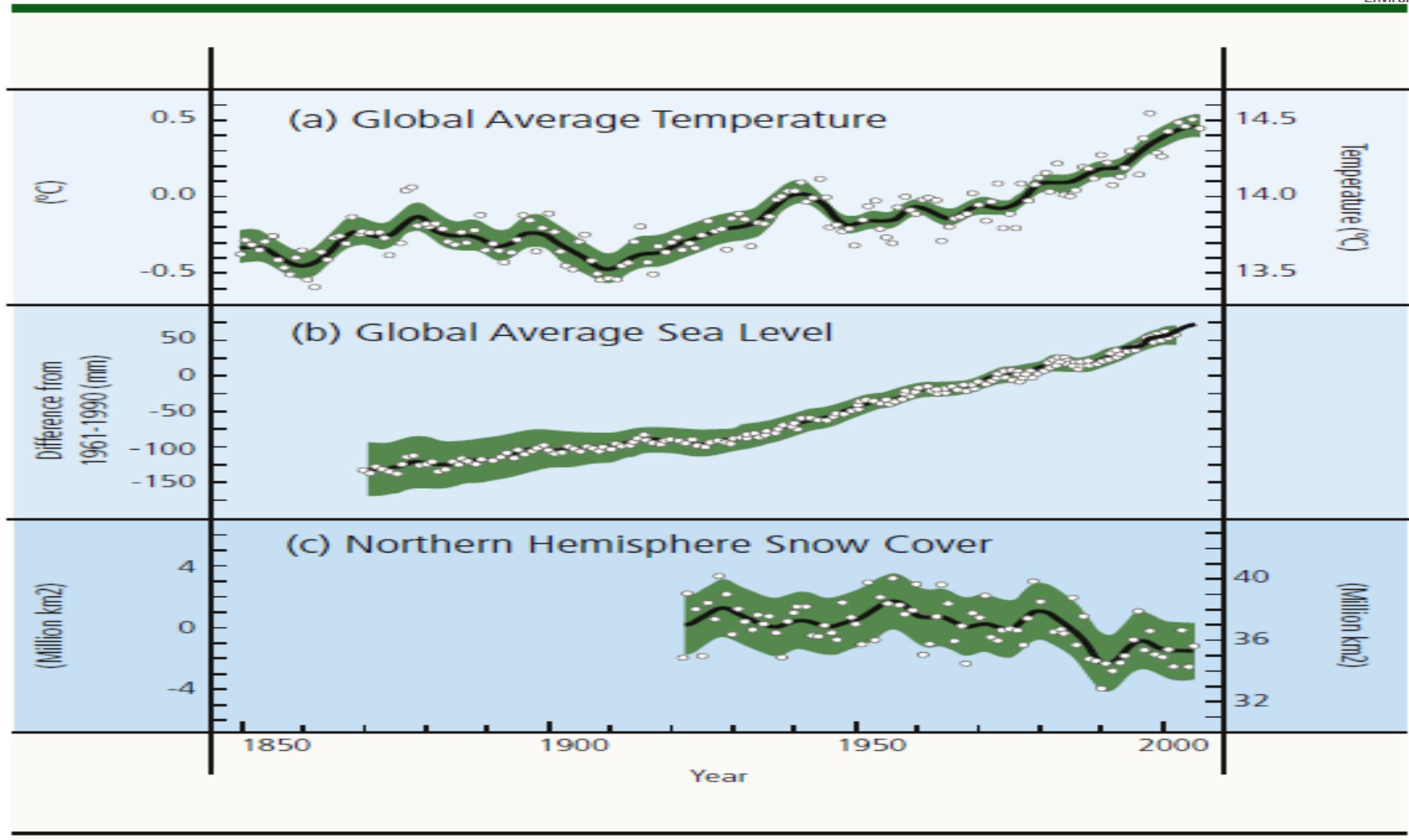


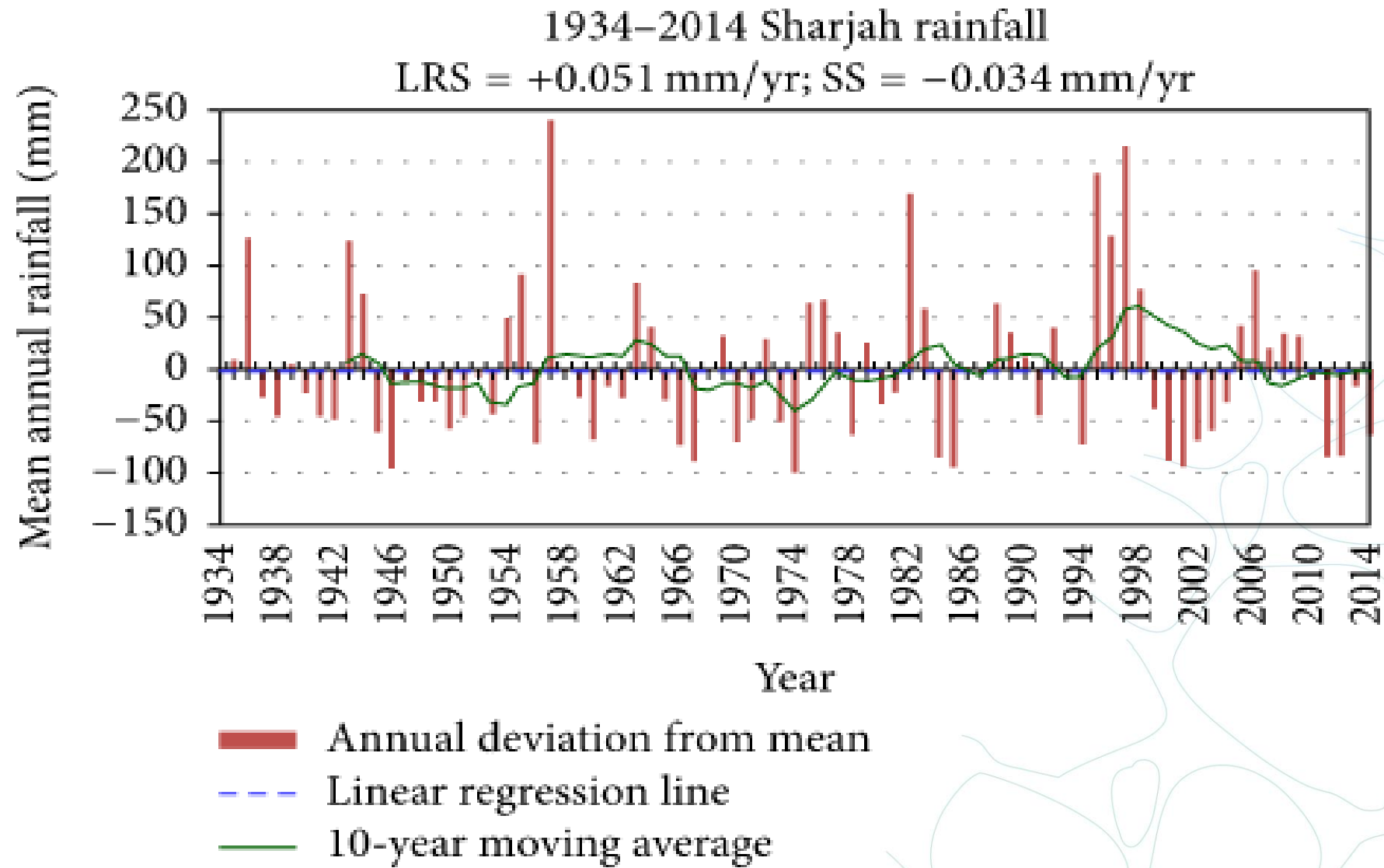
THE ATMOSPHERE

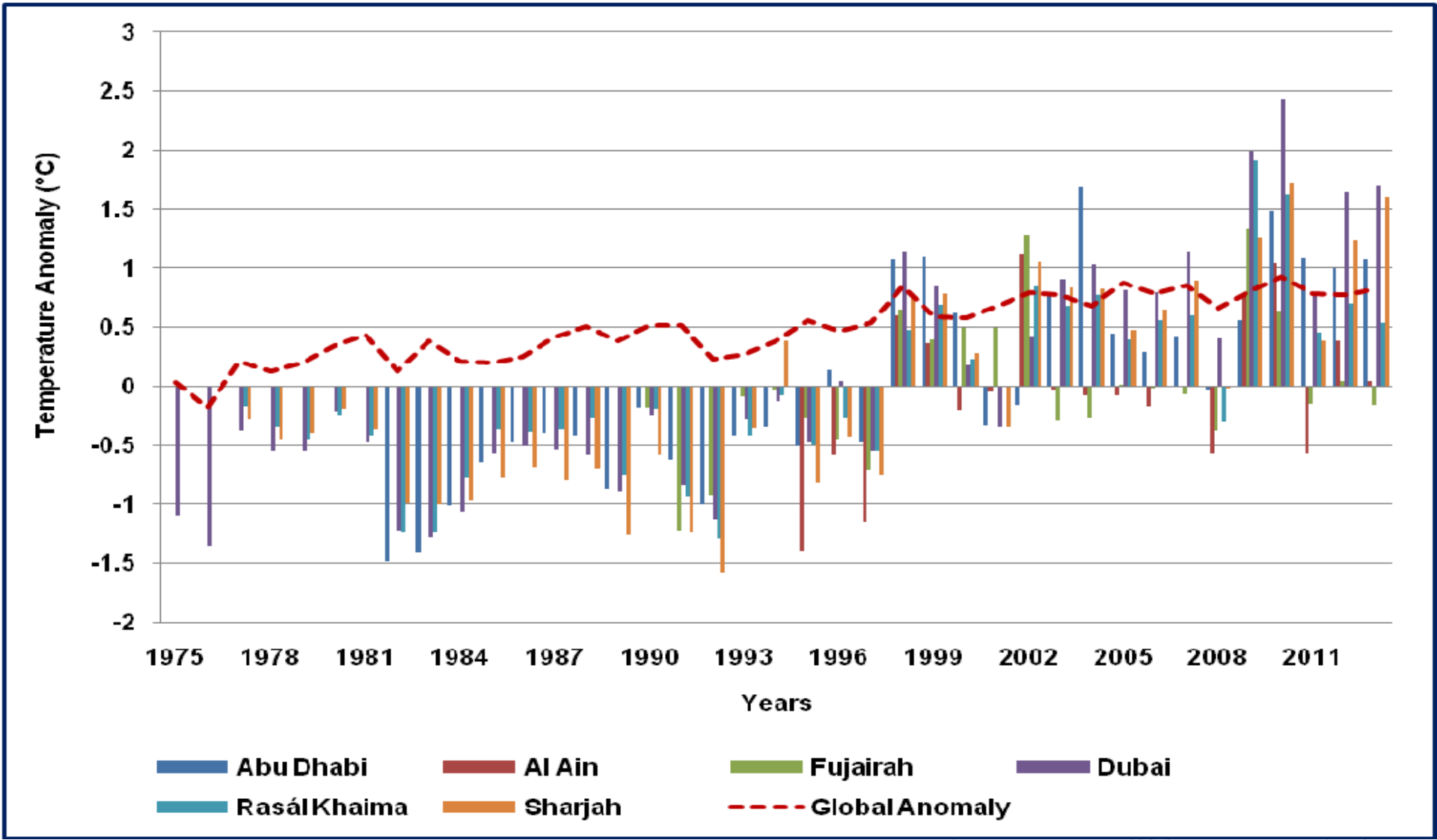


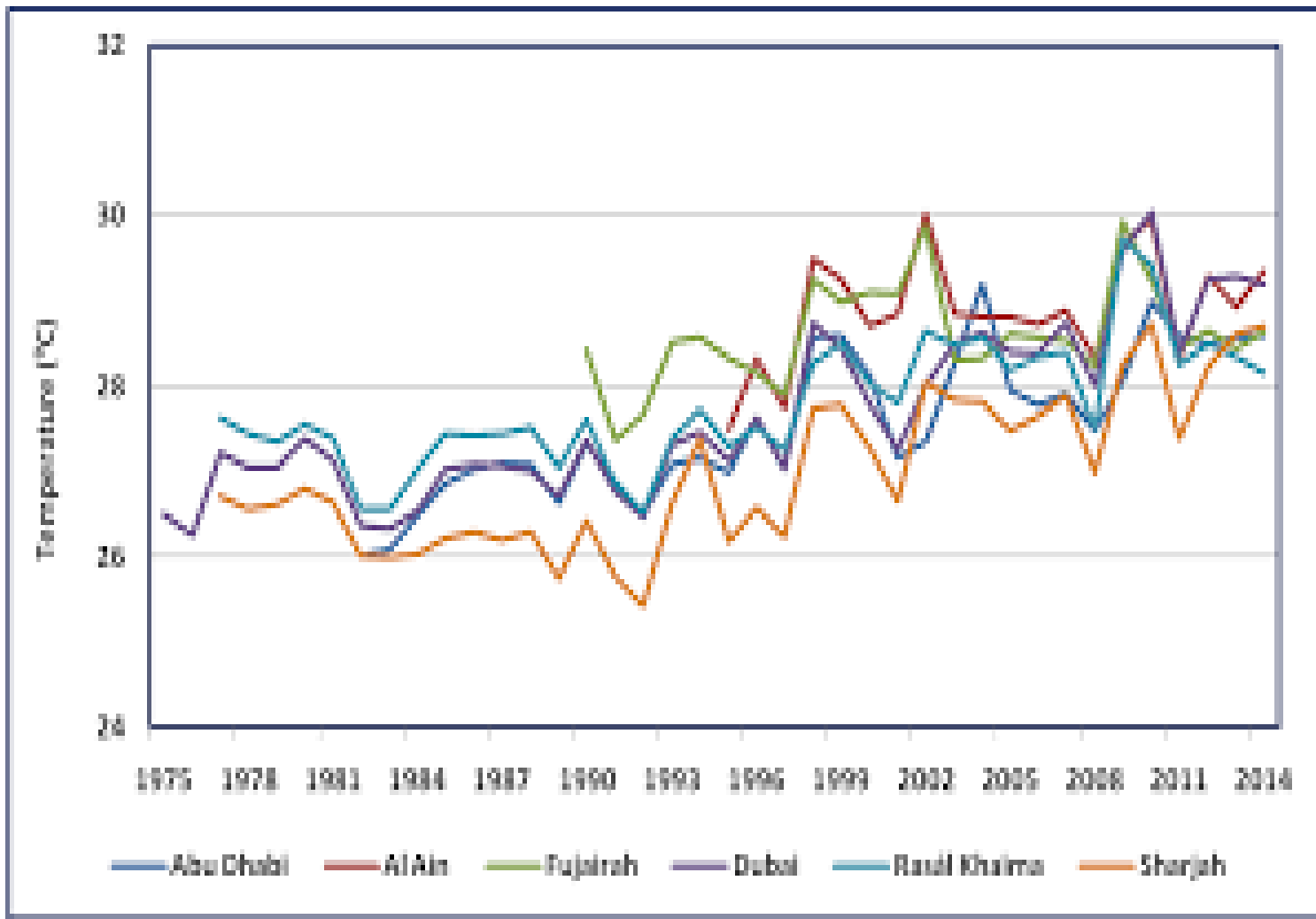


# CLIMATE CHANGE



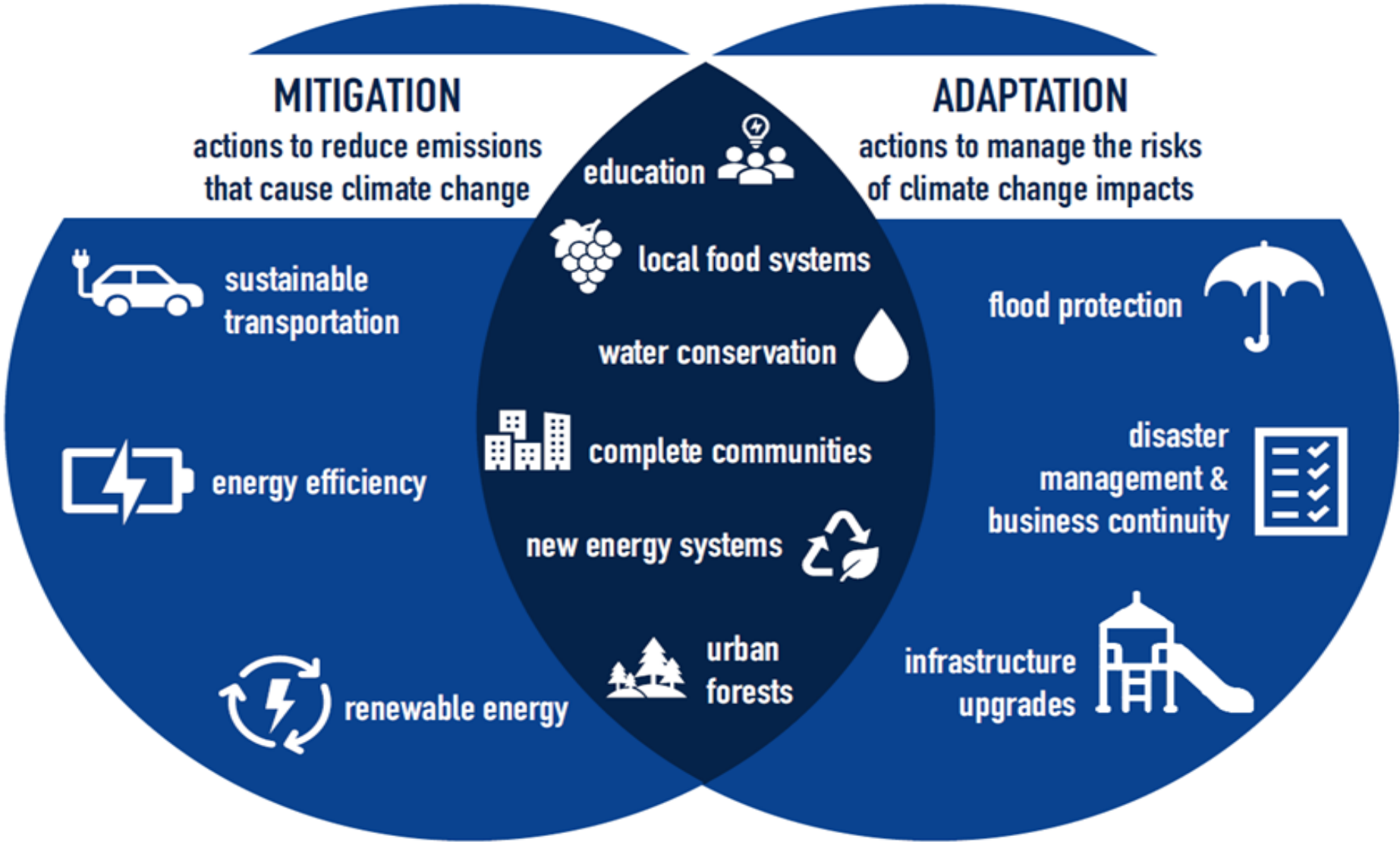




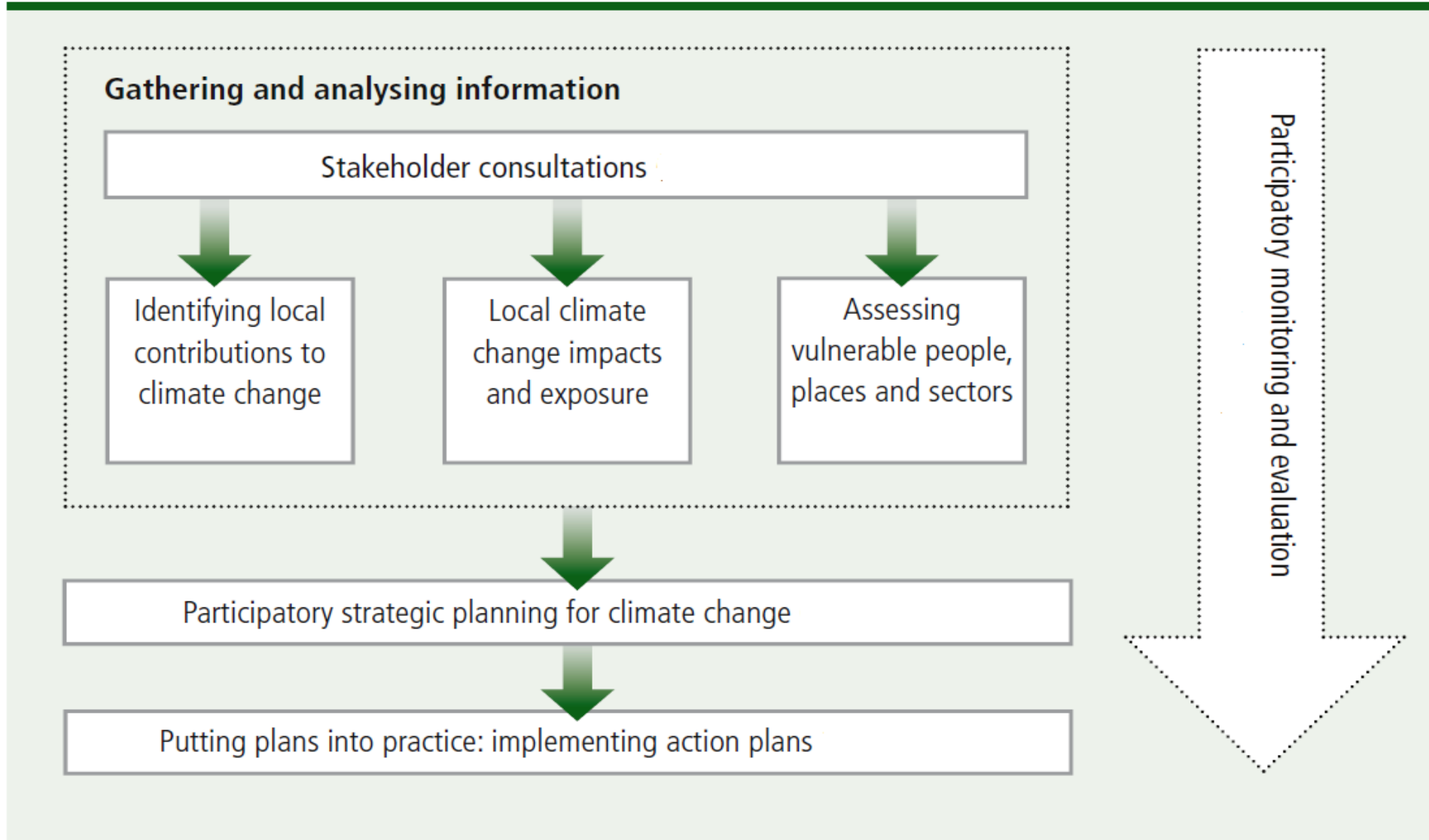




# MITIGATION & ADAPTATION

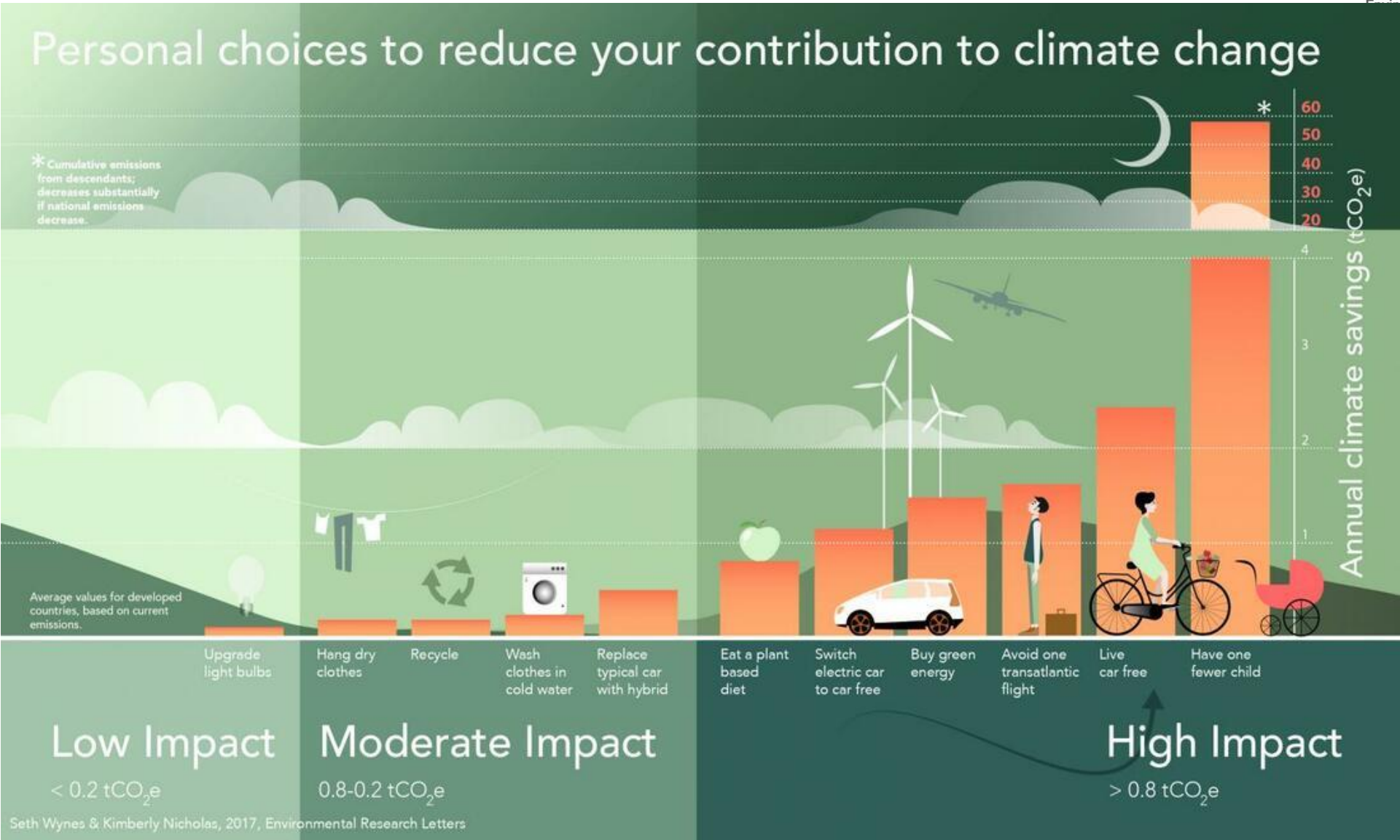








# WHAT YOU CAN DO





1. How many TOE you were consuming of electricity within one month?

**(TOE) tons of oil-equivalent energy=11630 kWh**

$16,000/11630= 1.376$  TOE

2. How many tons of CO2 your house was emitted during the same month?

**1 ton of oil-equivalent energy = 2.4 tons of CO2 emissions**

$2.4 \times 1.376 = 3.3$  tons CO2 emissions

3. How many tons of CO2 will be emitted till 2050 as part of climate change impact if the UAE is consuming the electricity in the rate of

**Total energy consumption 6.3 TOE/capita (2020), ENERDATA**

Let's assume that CO2 concentration in this year (2020) 415 ppm and 445 in year 2050

**1 ppm =7.8 Billion tons of CO2**

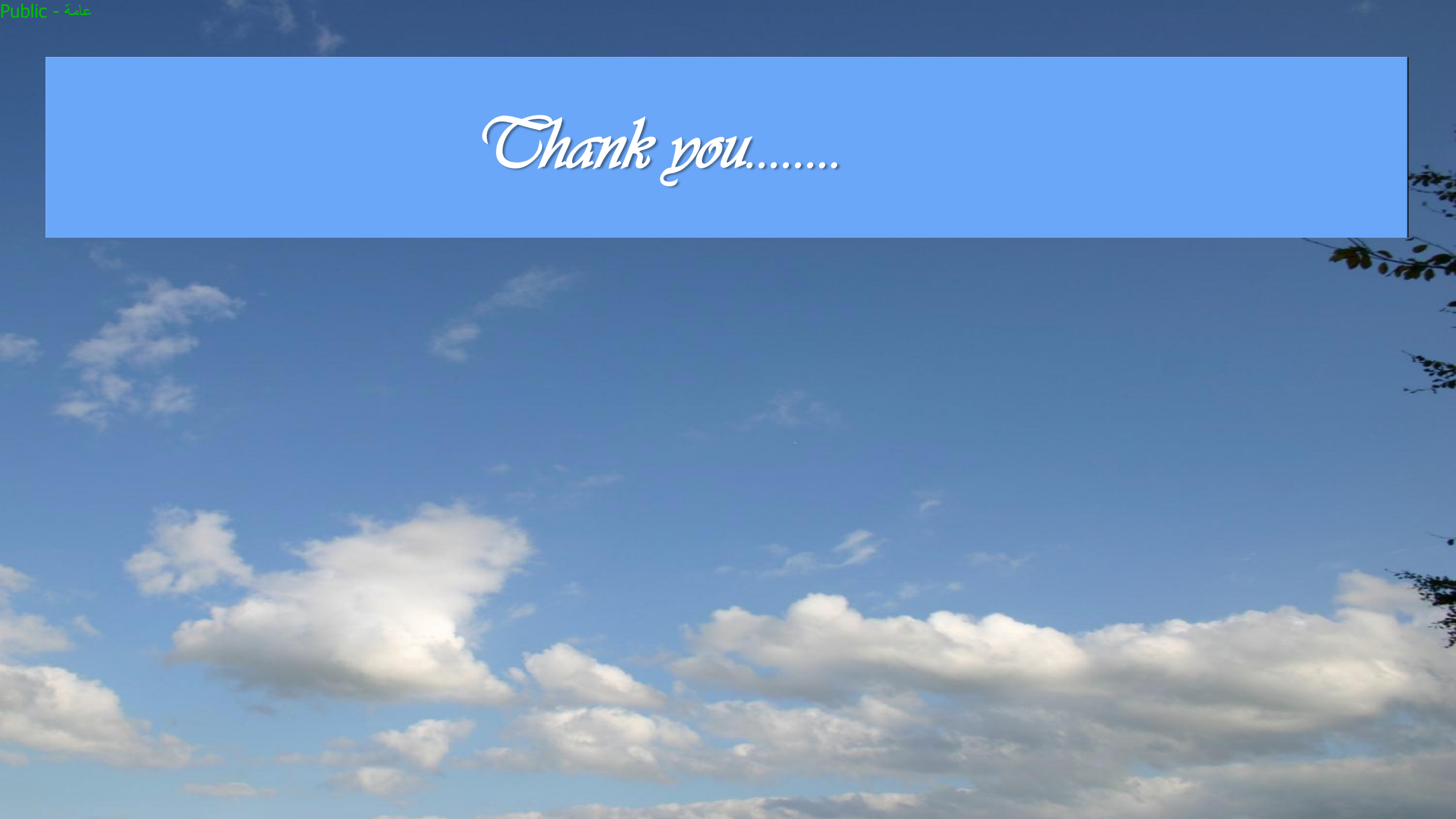
UAE TOE =  $6.3 \times 10$  M = 63 M TOE, Total CO2 emissions =  $63 \times 2.4 = 151$  M Ton

UAE energy consumption contribution in 2020 = 0.02 PPM, in 30 years = 0.6 PPM

$430 - 400 = 30$  PPM

UAE PPM increase contribution till 2050 = 2% !!!!

*Thank you.....*



THANK YOU

#AIEC2022 | WWW.AIEC.AE